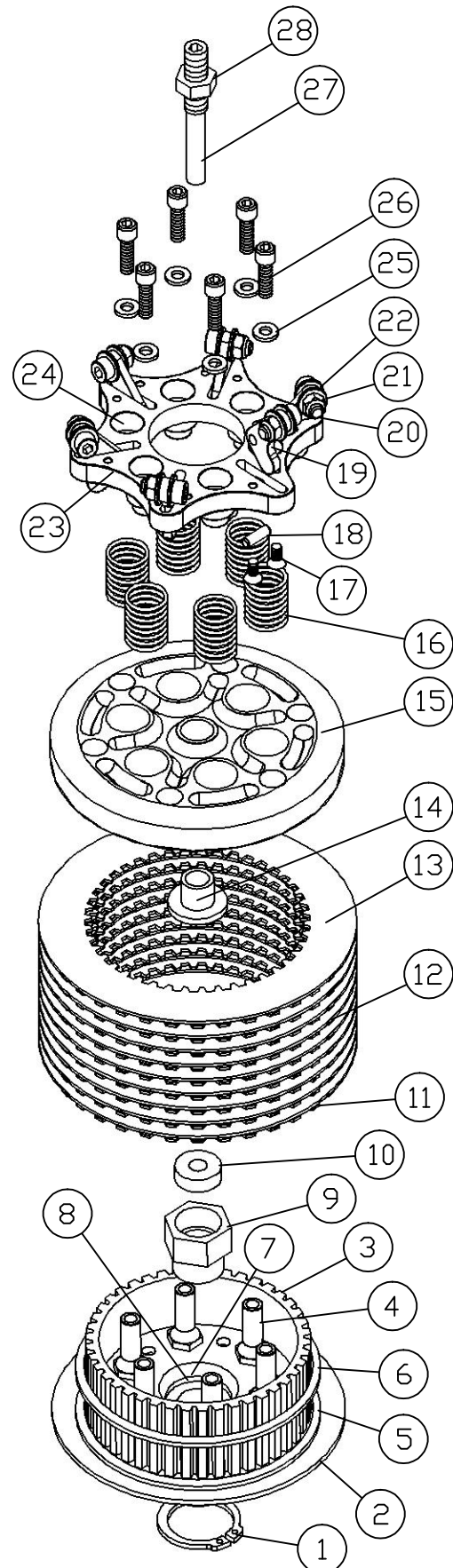


# SCORPION BILLET CLUTCH ASSEMBLY PART #608-30-20090



No.	Qty	Part #	Description
1	1	606-30-10111	Snap Ring
2	1	606-30-10102	Clutch Hub
3	1	606-30-10103	Clutch Disk Spline
4	6	606-30-10105	Clutch Mount Stud
5	1	506-00-22159	Damper Spring Seat (Flat)
6	1	506-00-21458	Damper Spring (Dished)
7	1	606-30-10106	Shaft Position Washer
8	1	606-30-10107	Bellville Washer
9	1	606-30-10108	Main Shaft Nut (Optional)
10	1	606-30-10110	Main Shaft Seal (Optional)
11	1	301-32-41123	Friction "B" Plate
12	8	301-32-40123	Friction Plate
13	9	401-32-047131	Steel Drive Plate
14	1	606-30-10113	Threaded Insert
15	1	606-30-21151	Clutch Pressure Plate
16	6	501-42-01095	Clutch Spring-Black 42# @ 1"
16	6	501-57-01007	Clutch Spring-Gold 58# @ 1"
16	6	501-82-01023	Clutch Spring-Green 82# @ 1"
17	12	606-30-50106	10-32 x 5/8 FHCS
18	6	600-30-89106	3/16 x 5/8 Steel Dowel Pin
19	6	606-30-21153	Lock-Up Fingers
20	6	600-30-71616	M6 x 1 x 16M SHCS
21	6	600-30-11006	6MM Lock Nut
22	24	600-30-00562	1/4 x 9/16 OD Weight Washer
23	1	606-30-21150	Lock-Up Head
24	6	606-30-21057	Pressure Plate Insert
25	6	600-30-02006	M6 Alum Flat Washer
26	6	600-30-71630	6MM x 1 x 30MM Blue SHCS
27	1	606-30-10109	Adjustment Screw 2 1/2" Long
28	1	606-30-10114	7/16-20 Jam Nut